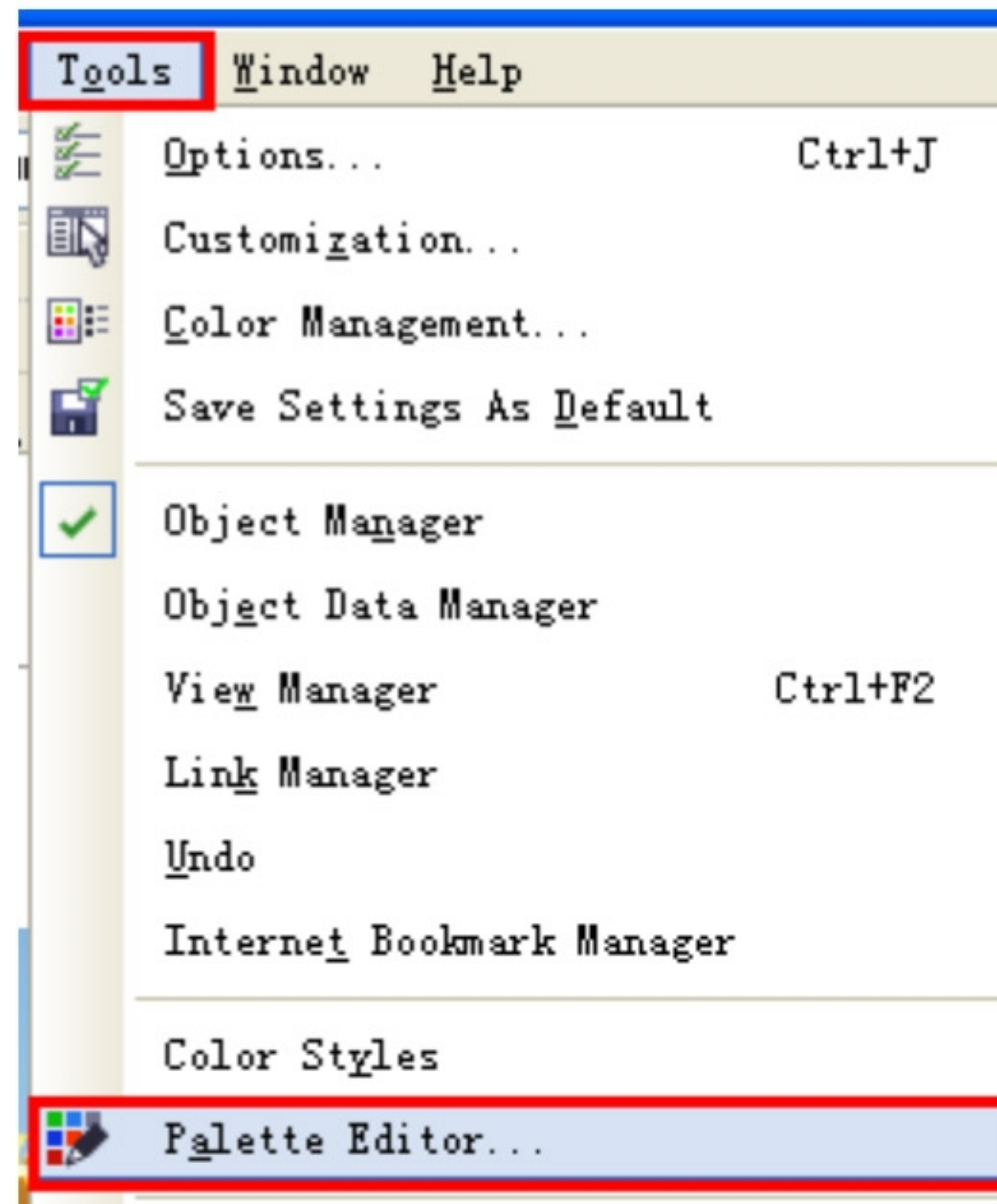


Made the spot white in Coreldraw

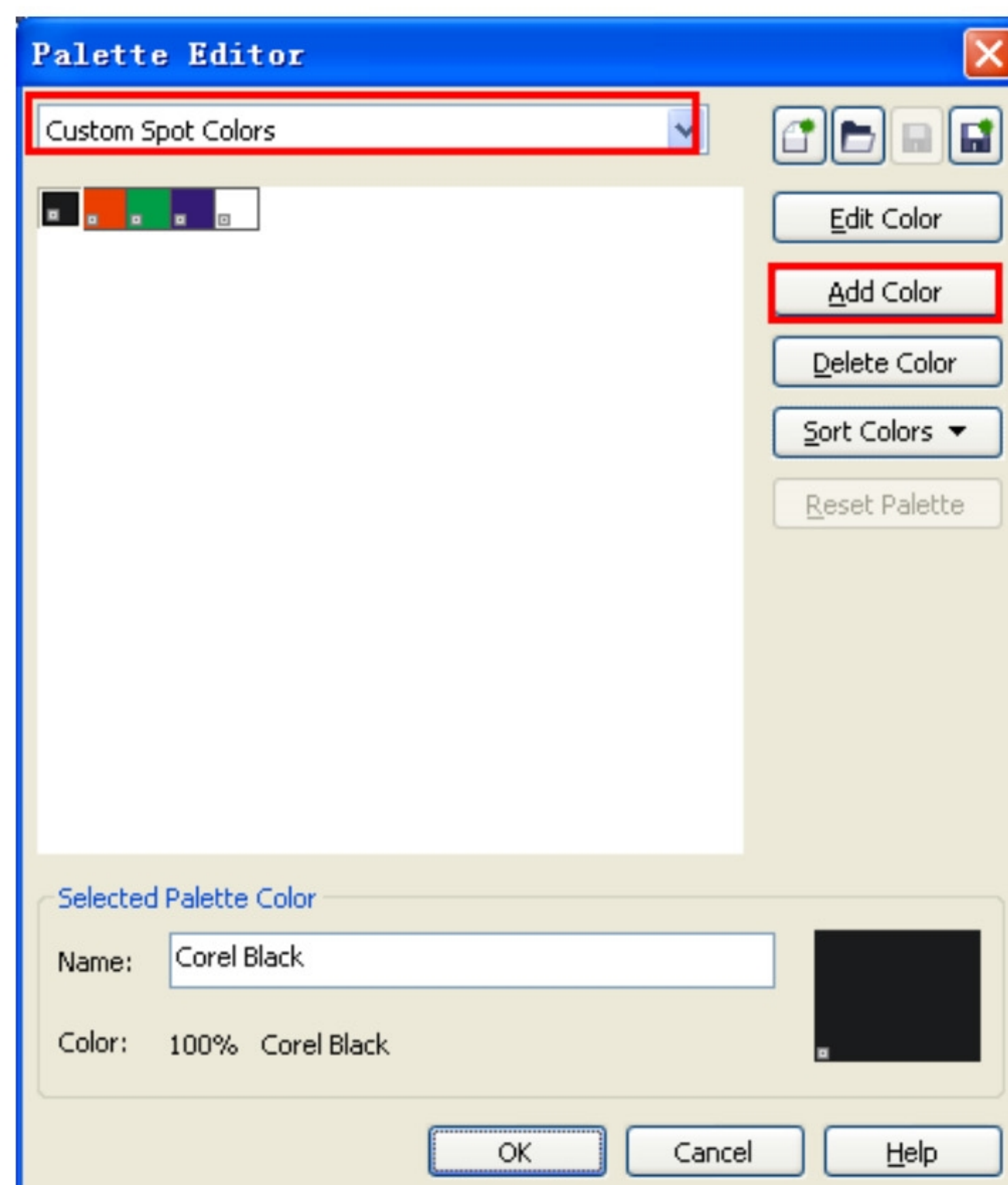
1 Open the Palette Editor.



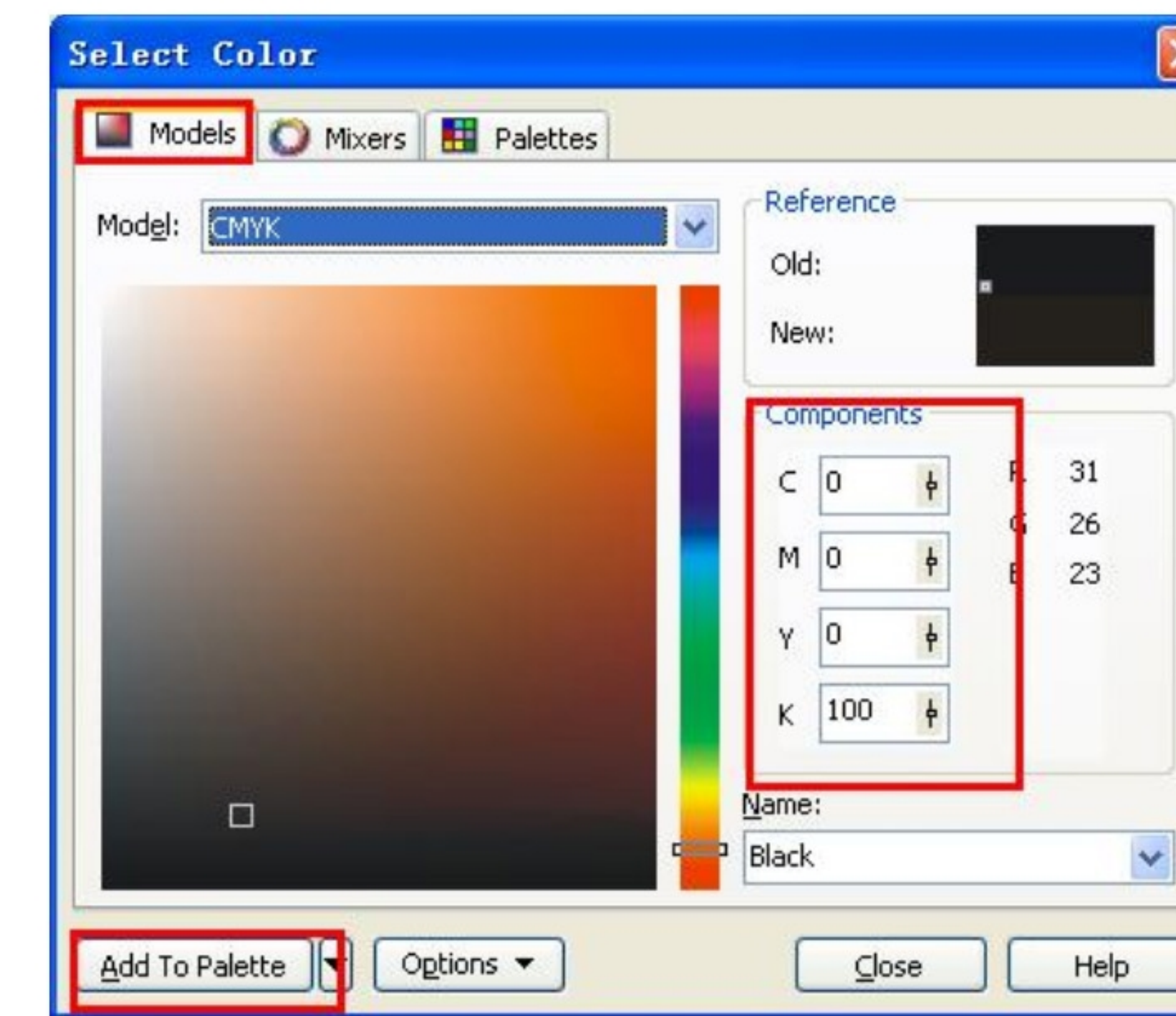
Tips: Tools-Palette Editor.

2 Add spot white color.

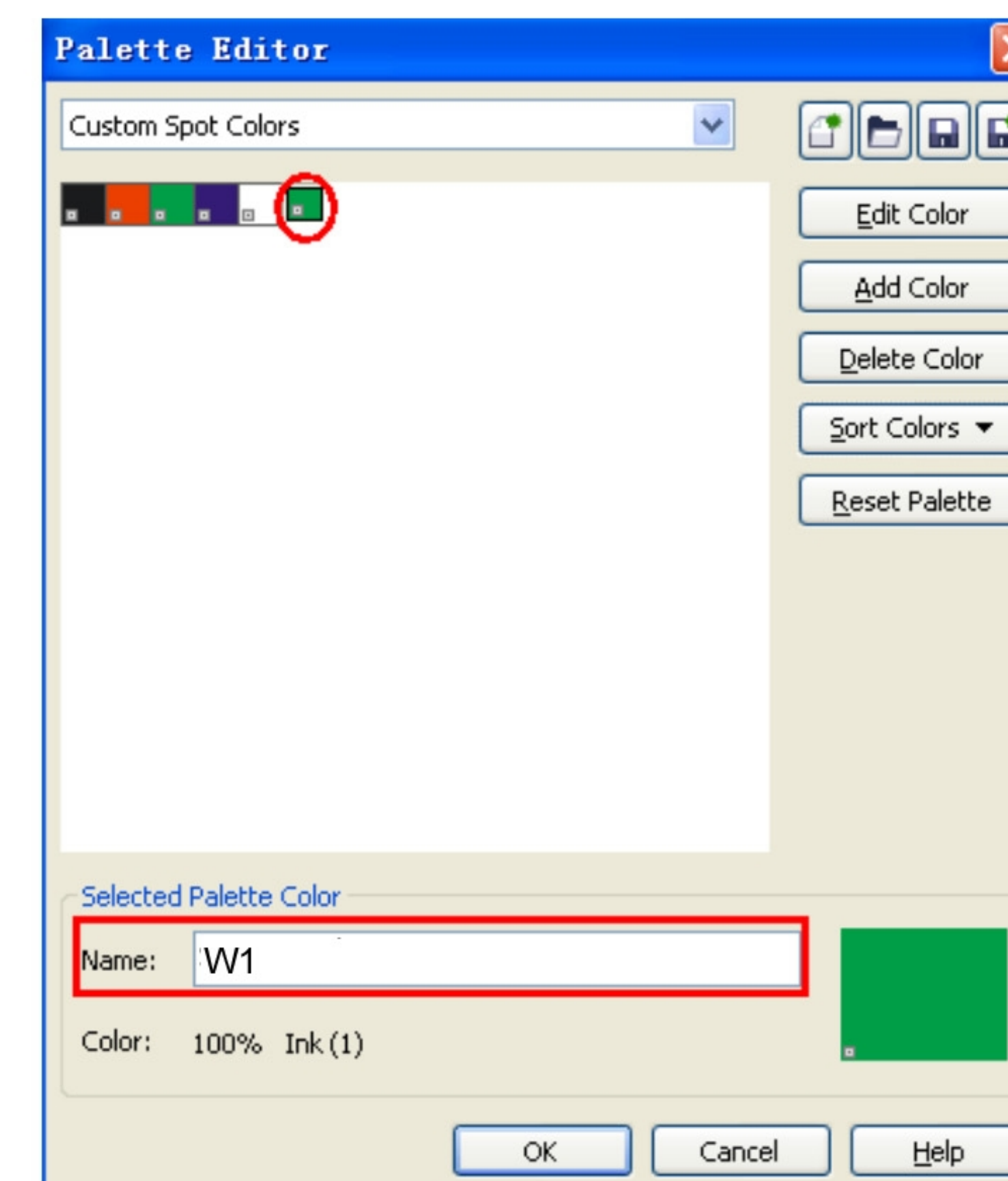
Choose the custom spot colors and click add color.



Choose the models and add to palette.



Set the name is **W1** and click ok.

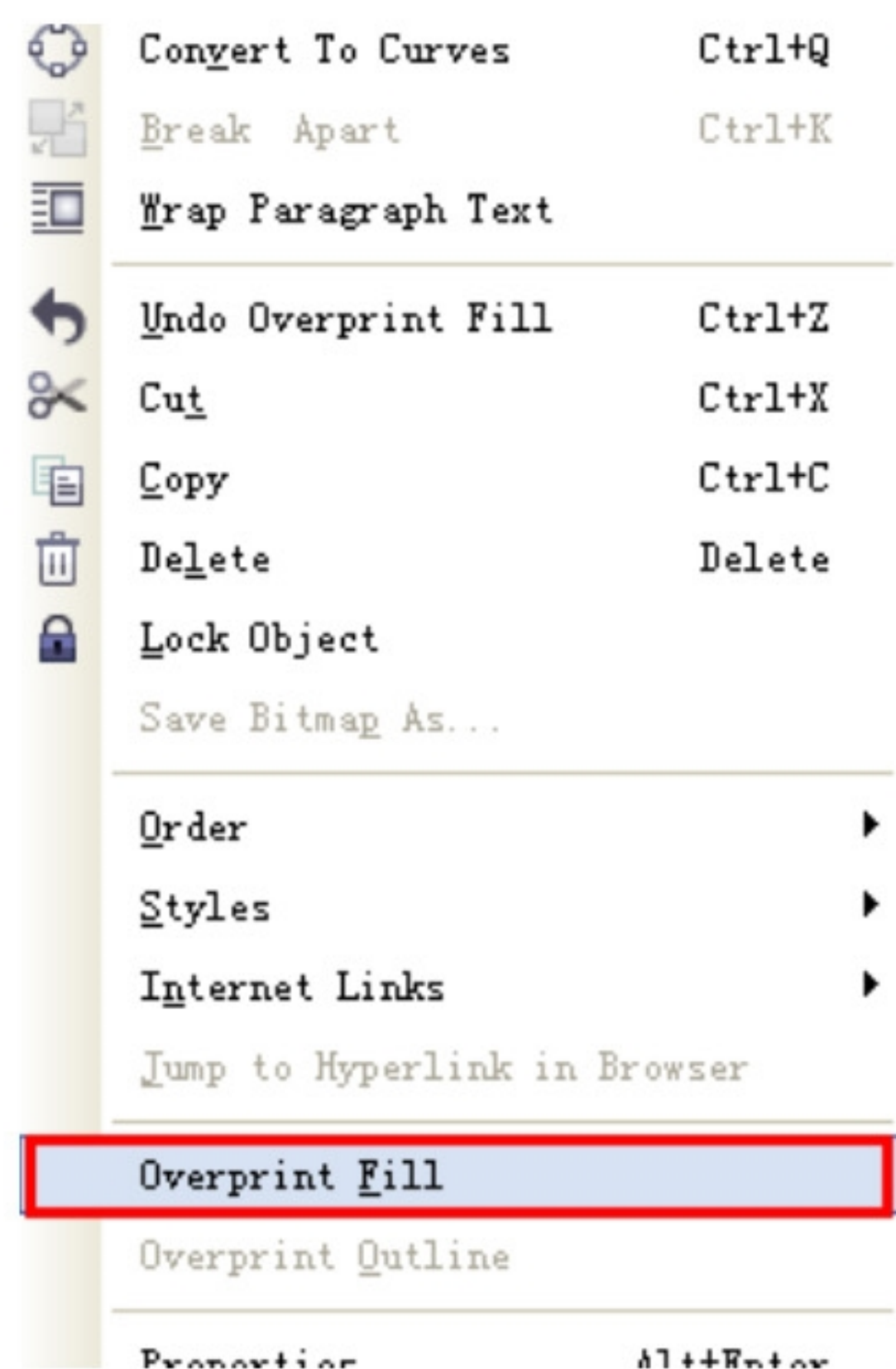
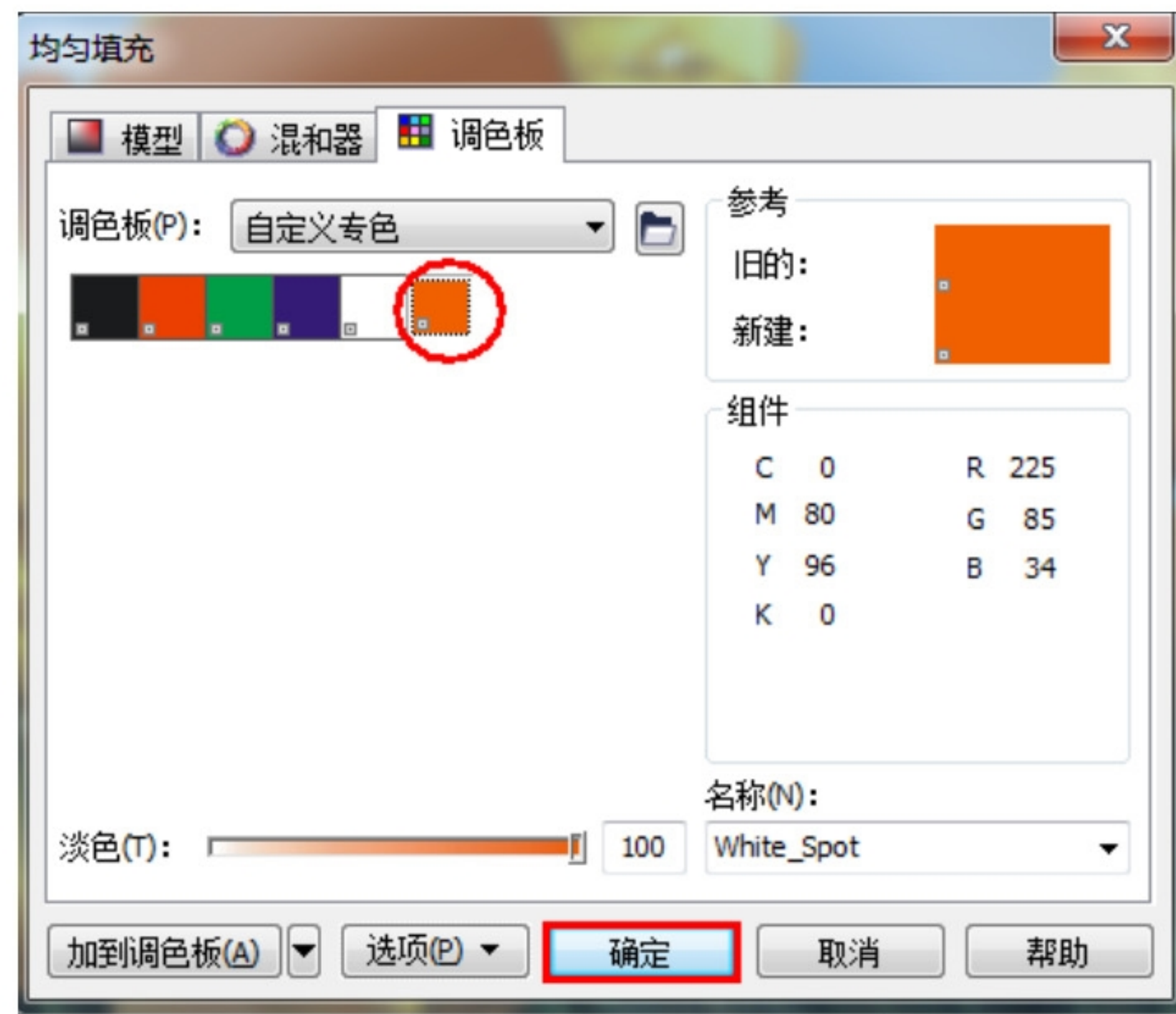


3 Create some texts or objects that you want to fill with the spot white.

Made the spot white in Coreldraw

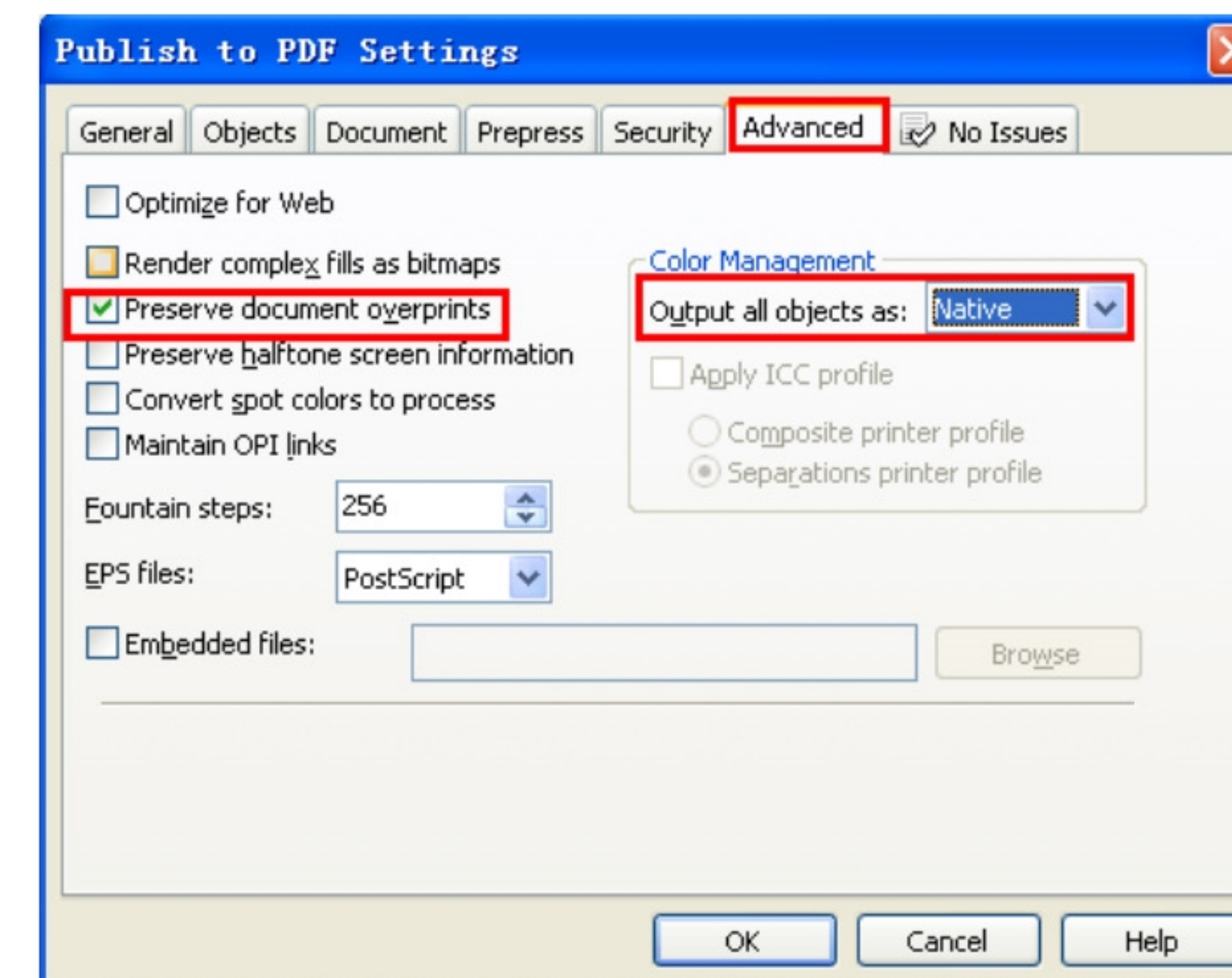
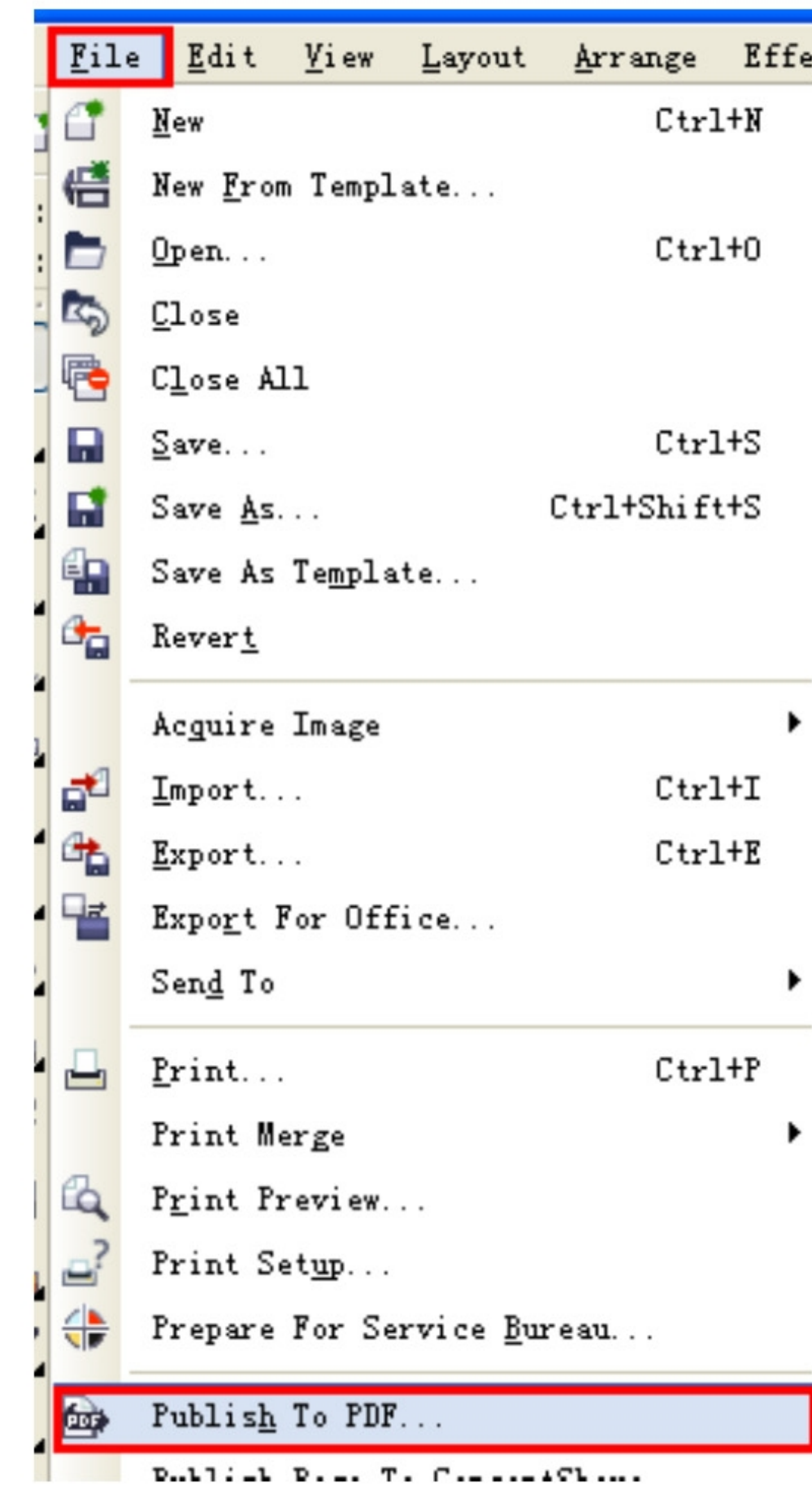


4 Fill Objects with Spot White Swatch and overprint.



Tips: Select the object and right mouse click.

6 Publish to PDF



- Tips:
1. Checked the preserve document overprints.
 2. Set output all objects as native.

5 Add the pdf file to Maintop