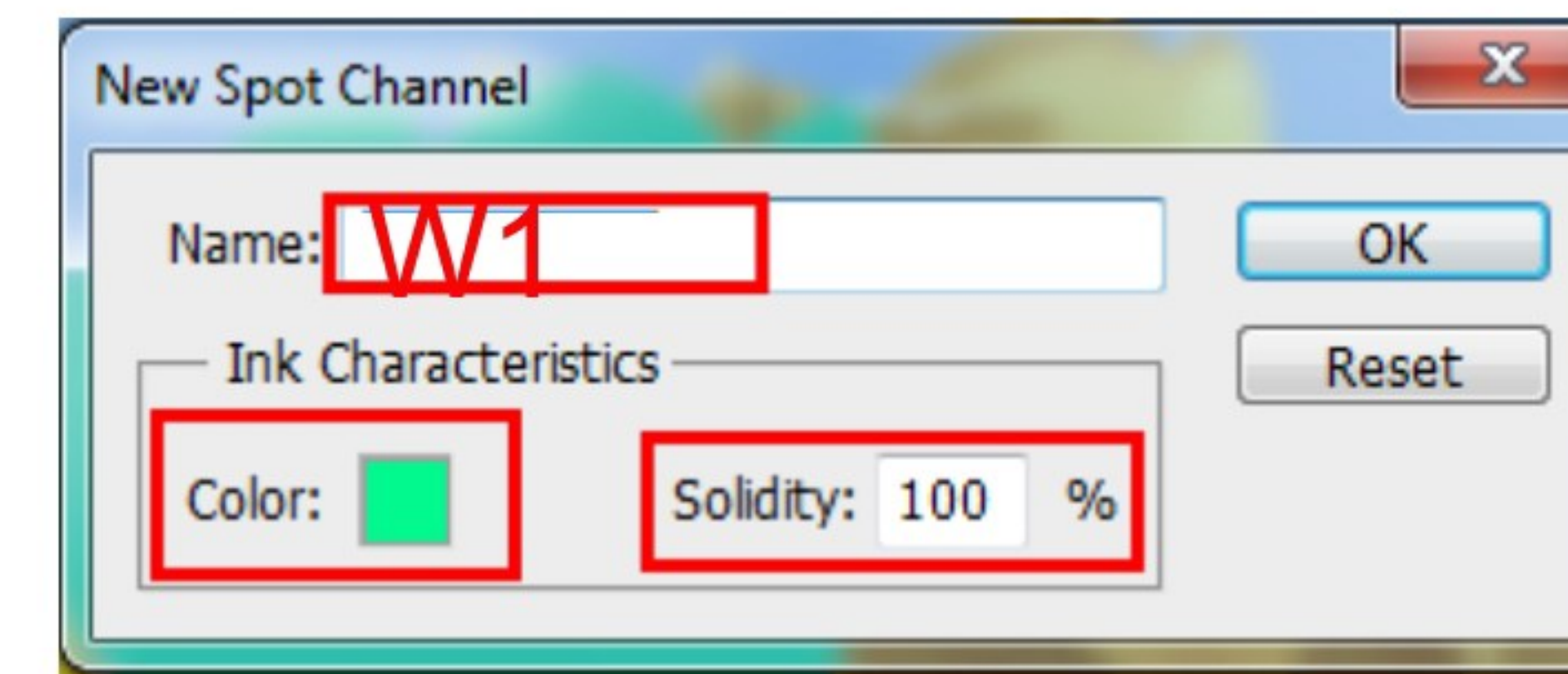
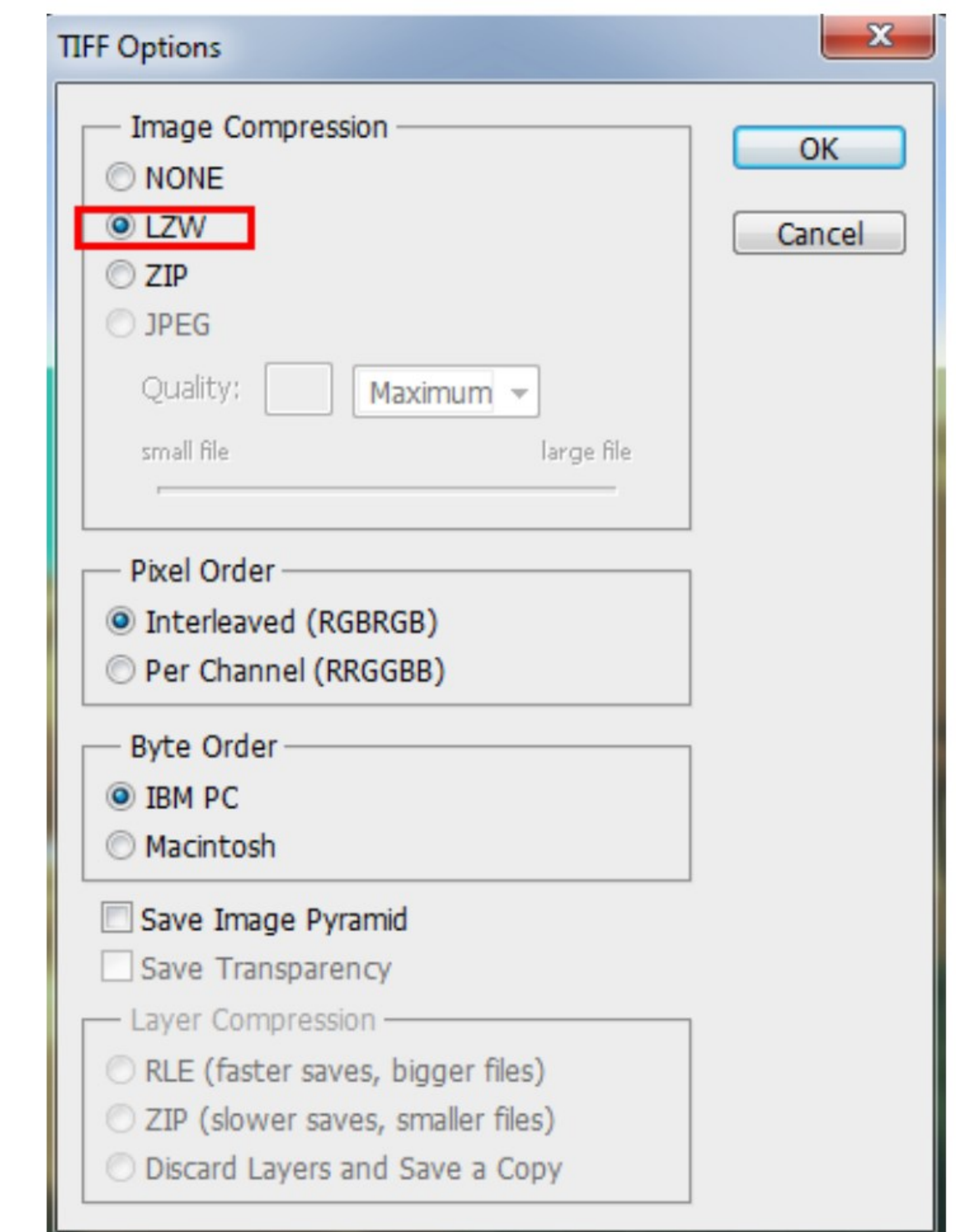
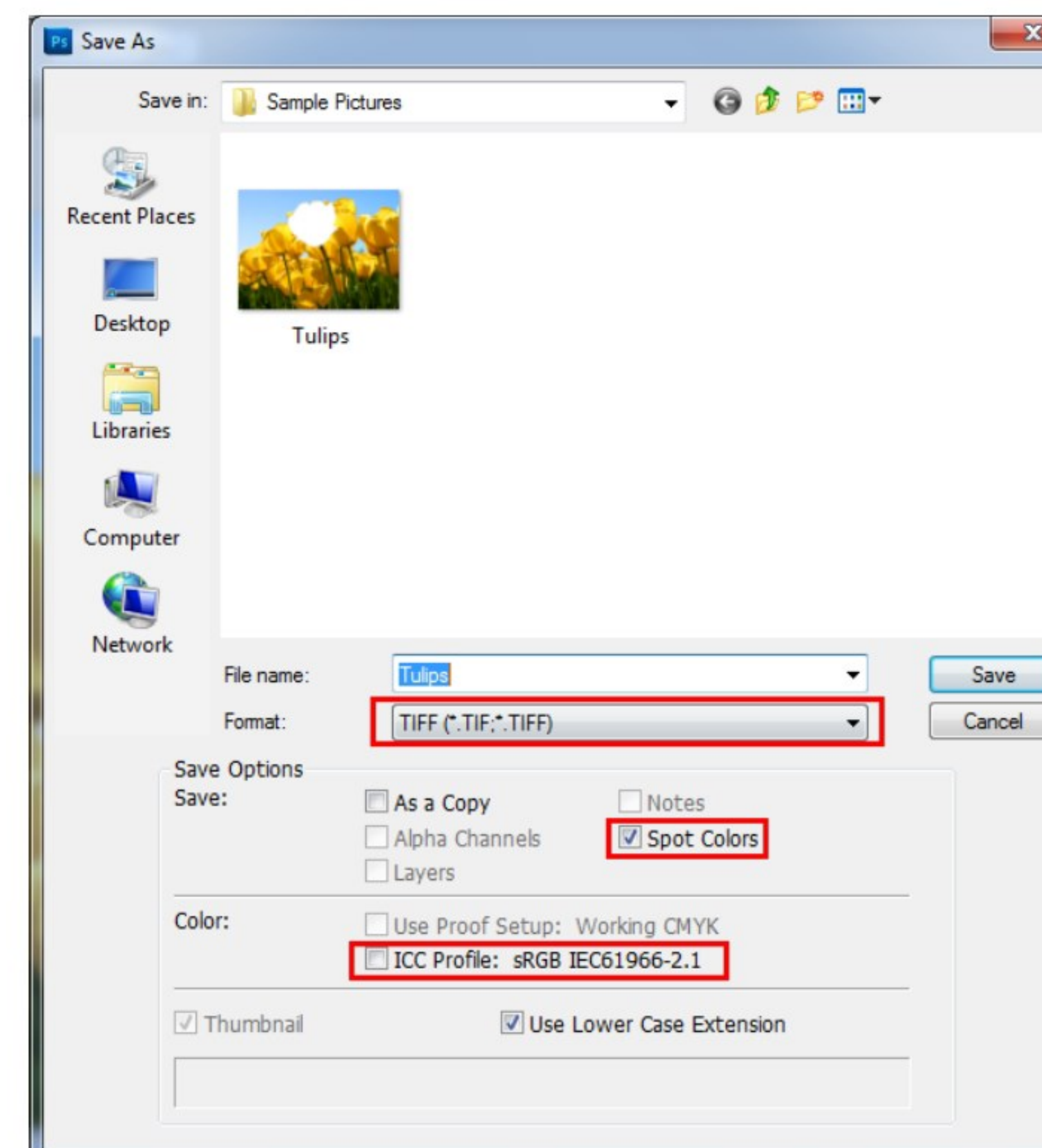


Made the spot white in Photoshop

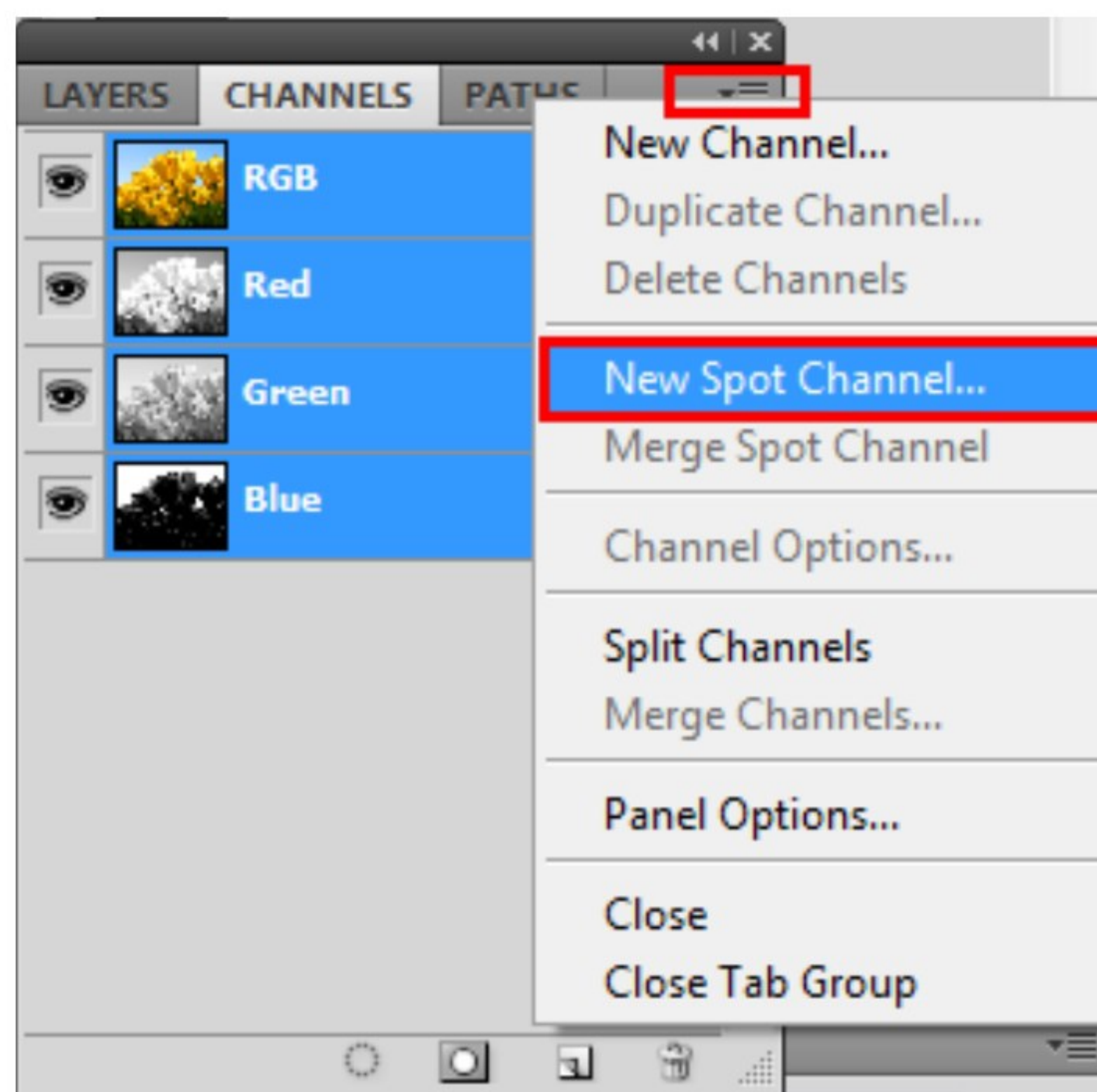
- 1 Open the Photoshop and use the marquee or quick selection tools create the selection that you want to made the white spot.



- 4 Save as TIFF format.



- 2 Create a new spot channel.



- 3 Set the spot name **W1** and ink characteristics.

- 5 Add the TIFF file to the maintop

Tips: 1、 Save option: Let the “spot color” checked.

Color: Let the “ICC profiles” unchecked.

2、 TIFF options: Use the LZW compression.