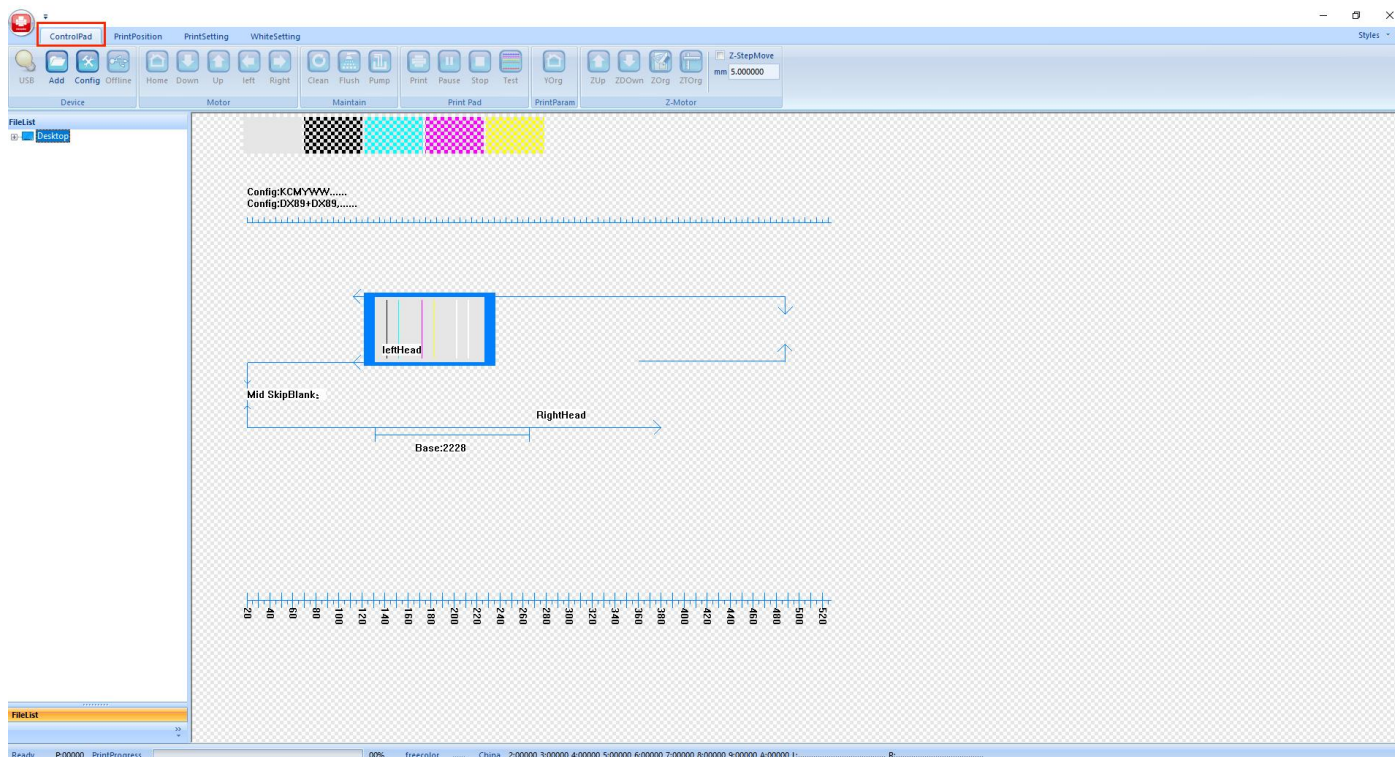


1. Software

Control Pad Area



2:“Device” Area



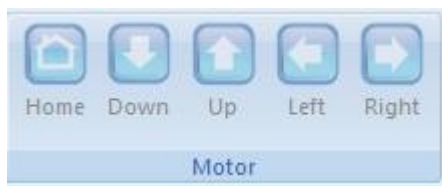
Power: Machine power indicator light

Add: Import the picture

Config: Administrator parameter settings (please operate under the guidance of a technician, please do not change the parameters inside at will)

Offline/online: software connection with printer if online

3、“Motor” Area



Home: Carriage back to home position and cap go up to touch head

Down: Table go to front side

Up: Table go to back side

Left: Carriage move to left side (**Note that move to the left, you need to press and hold to wait for the car to move out of the origin)**

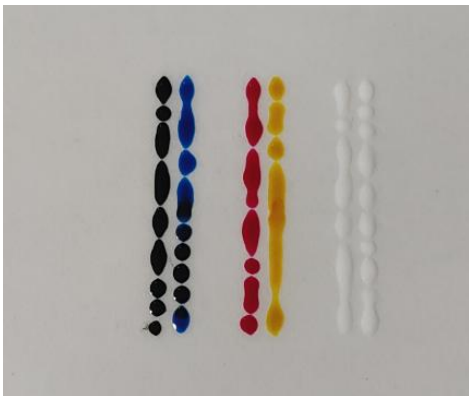
Right: Carriage move to right side

4、"Maintain" Area



Clean: The ink pump draws ink from the print head nozzle, the scraper scrapes the surface of the nozzle clean, and then the flash spray cleans the nozzle holes automatic.

Flush: The nozzle ejects ink to solve the print head color cross-color problem and check whether the print head channel is normal (as shown below)



Pump: The ink pump draws ink from print head only (click one time, the pump start work, when you need to stop , click again, it will stop)

5、"Print Pad" area



Print: Start Print Task (when you click , it will show the below window)

请确认打印数量

打印数量Y	1	份Y	Y向间隔	0	毫米
打印分数X	1	份X	X向间隔	0	毫米
Y向起点	8	毫米			

☐ 当前位置
 ☒ 指定位置
 ☒ Y复位

Current Position: Print from Table current stop position

Y Specifled Position: Print from Set location in Y direction

Y Specified reset: The table back to zero position

(The Specify location and Y reset need to be selected together)

Pause: Pause Print

Stop: Stop Print)

Test: Nozzle test to check printhead status(as below)



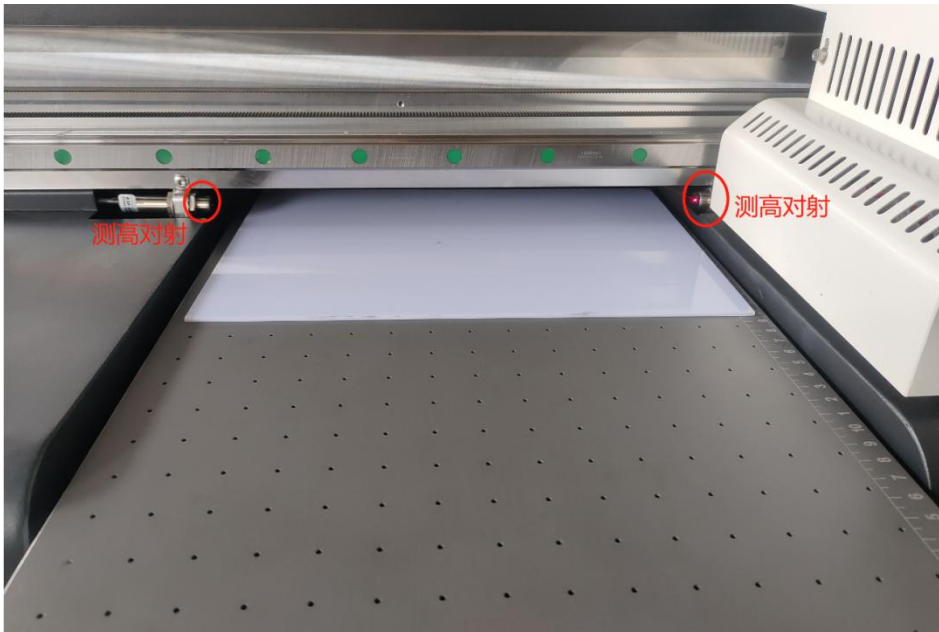
6、

YHome: Table go back to zero position

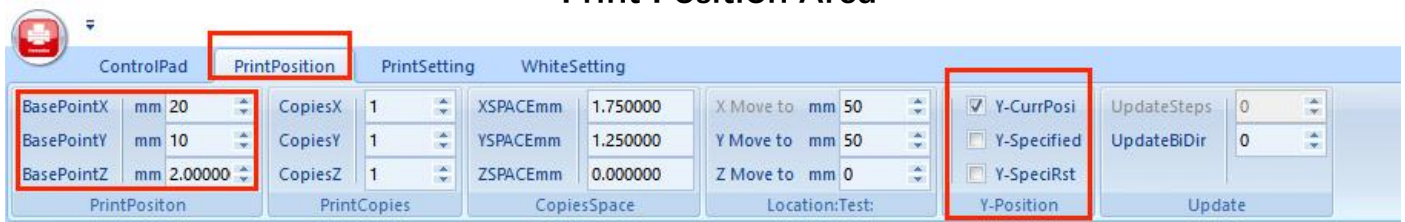
Z Up/ Z Down: Table move up and down

Z Down Org: Table move down to zero position

ZTest: Detect printing height : Place the printing material in the middle of the height measurement platform. Click this button and the platform will automatically rise to the correct printing height (the distance between the print head and the printing material is 2-3MM.) Check the printing height before printing to avoid hitting the print head. **Noted: for transparent materials (such as glass/ transparent acrylic etc), you need to cover the side or top of materials with something opaque, otherwise the sensor not works correctly.**



Print Position Area



This interface only uses "Print Position" and "Y Position". Leave other options untouched.

Print Position:

WorkPointX: Put number to set the X start position

WorkPointY: Put number to set the Y start position

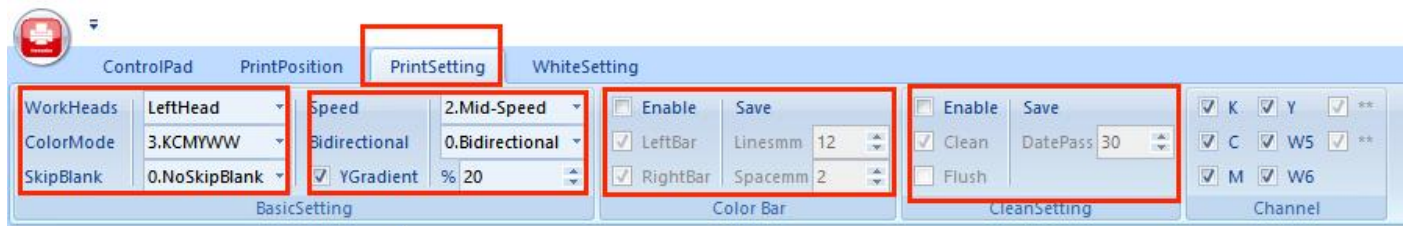
WorkPointZ: NOT WORK

Y Specifled Position: Print from Set location in Y direction

Y Specified reset: The table back to zero position

(The Specify location and Y reset need to be selected together)

Print Setting Area



BasicSetting



WorkHeads: Choose LeftHead

ColorMode: choose No.3

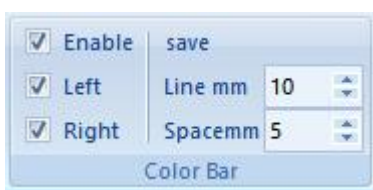
Skip Blank: Skip the blank area in the picture when printing the picture (use option 2 new skip)

Speed: Slow/Middle/High for choice

Bidirectional: unidirectional (To left / To right) / Bidirectional for choice

Y Gradient: 0-100% , Select Gradient and Set Feather number. Big number will reduce the printed photo lines happen and improve the quality, but it will slow down the print speed.

Color Bar



Enable: Set ribbons on both sides or left /right side of the printed image (this function is only applicable to long-term printing monochrome mode to prevent other color channels from being blocked) The ribbons are as shown figure



CleanSetting



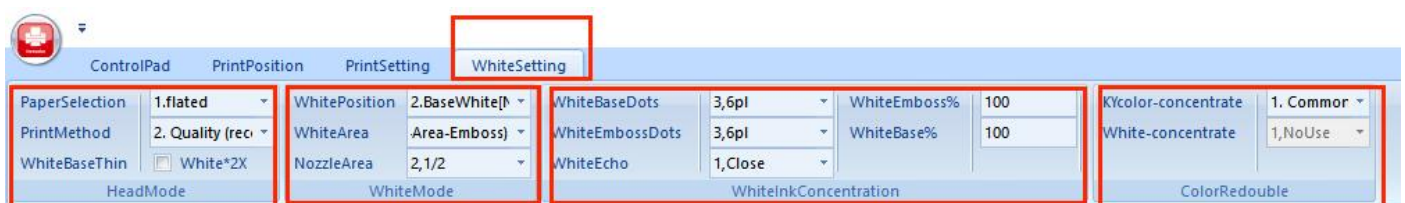
If you select the Enable, the printer will do cleaning or flush during printing. (such as pass number 30, means the print will make clean or flush one time every 30 pass printing), **it is not suggested to use it !**

Channel



The ink outlet channel of the nozzle is turned on to print ink, √ is to turn on the channel (please do not change it at will)

WhiteSetting



PaperSelection: No.1 - Flatbed, do not change

PrintMethod:

No.1 : Common ---Print picture with fast mode, the fastest printing speed (as well the smallest density of white and color ink printing), **it is suggested mode when you need fast speed printing**

No.2 : Quality----Clear mode (the good density amount of white ink and color ink printing), **it is suggested mode for high quality printing**

No.3 : HighEmboss----High-definition printing mode (the largest density amount of white ink, strong three-dimensional protrusion of printing) The printing speed slows down, **it is only used when you need to print high emboss effect**

WhiteBaseThin: **no need to select**

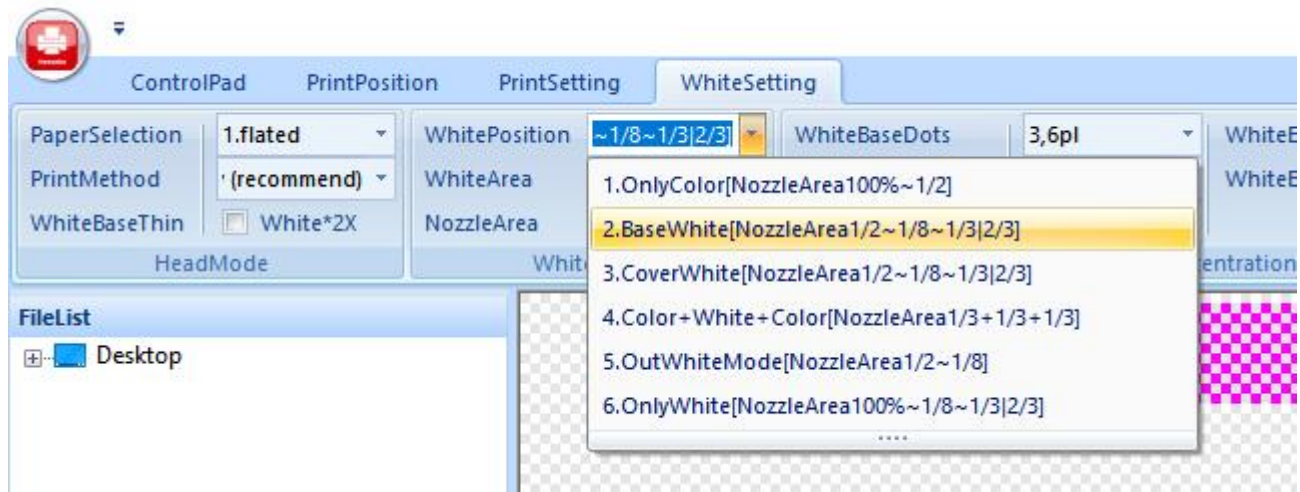
White Position:

No.2 - BaseWhite: Print white ink as base and then print color

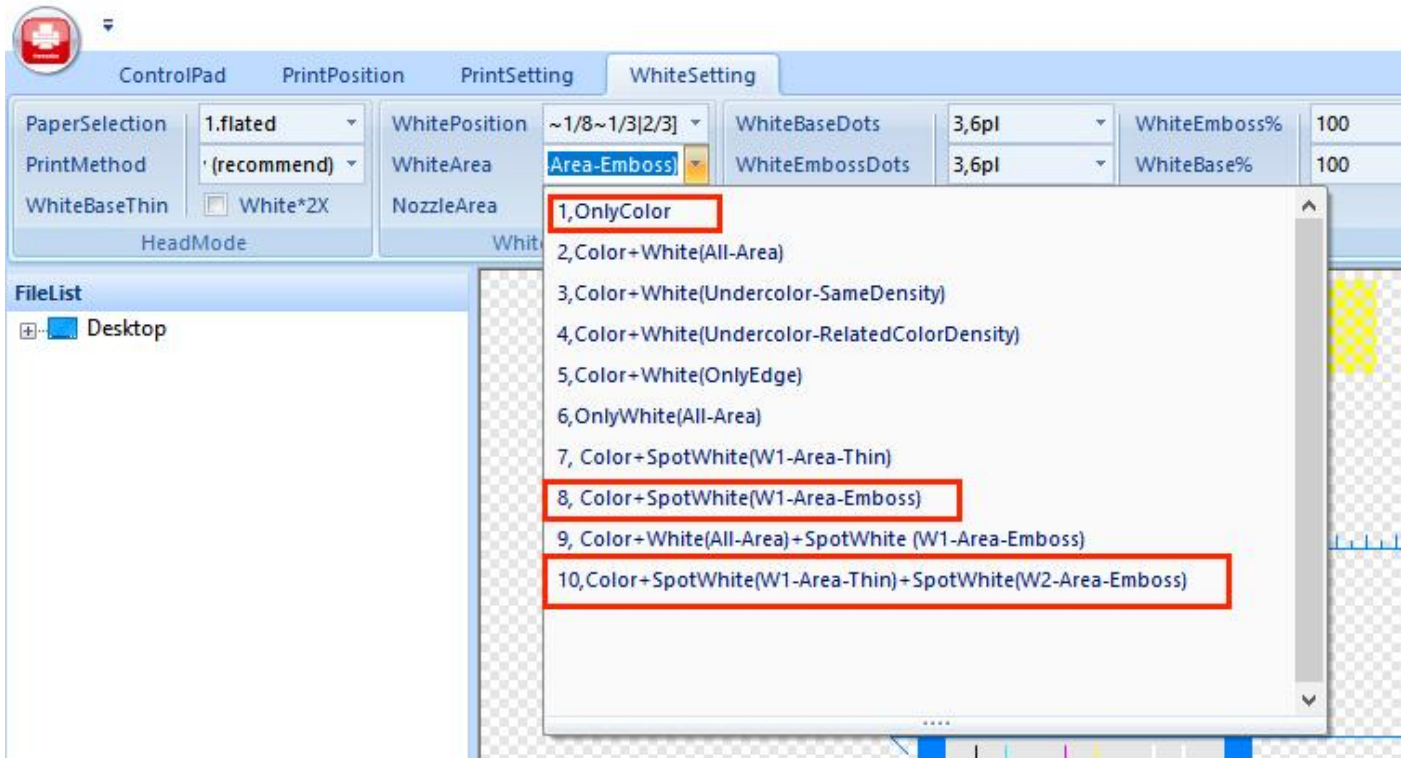
No.3 - CoverWhite: Print color firstly then print white ink.

No.1 - Only Color: do not print white ink, just print color

No.4 - Color+ White+ Color (for special printing only)



White Area:



If your photo with W1 spot channel , and you need to print white + color, just choose No. 8 (often used)

If your photo with W1 and W2 spot channel , and you need to print white + color, just choose No. 10 (few used)

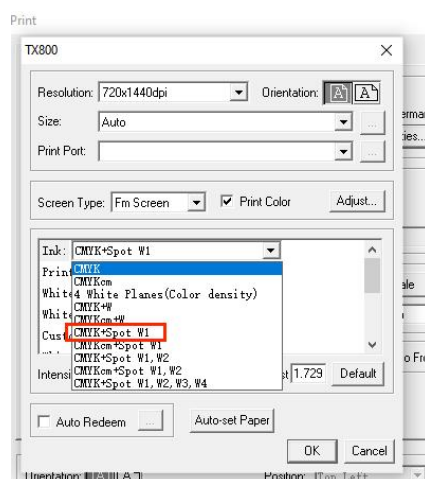
If you only need to print color, just choose No.1

For example No.8 printing process :

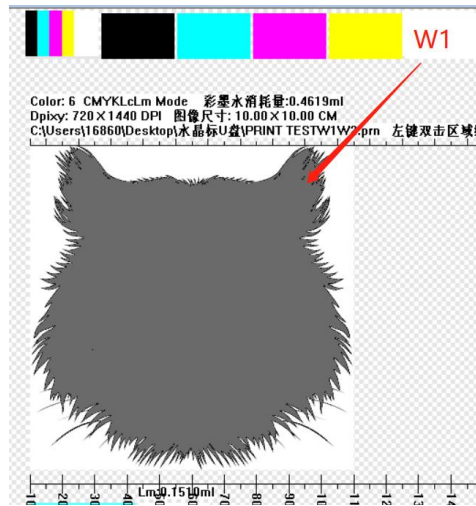
1.Created W1 spot channel with Photoshop



2. Choose CMYK+ spot W1 mode in Maintop



3.Choose Base White / White Area No.8 4. Preview W1 area



5. Print



***NozzleArea:** Always Select 1/2 when you need to print white ink, or 100% when you do not need to print white ink (only when you choose white position: No.1 - only color, it works)

WhiteInkConcentration

WhiteNoDataDots: 2pl/4pl/6pl for choice, big pl means big dots and big white density

WhiteDataDots: 2pl/4pl/6pl for choice, big pl means big dots and big white density

***6pl is suggested**

WhiteReliefs% : 0-100

WhitePercent: 0-100

***100 is suggested**

White Echo: normally close, if you need to print very high emboss effect, you can choose echo1-5, the print speed will slow down

WhiteNoDataDots	3,6pl	WhiteReliefs%	100
WhiteDataDots	3,6pl	WhitePercent:	100
WhiteEcho	1,Close		

WhiteInkConcentration

Bidirectional Number Adjustment

1. PrintMode: select XDPI=720 / 1dot,small

2. Click Test and Get Tested picture

E:\SystemSetting

SoftAdjustmentSetting MachineSetting ZCarAndUVSetting Y-StepSetting NetPrintSetting DriverSetting

PrintModeSelect

1,60cm+TestLineLeng 3.XDPI=720 1.VMD1 +VMD: Mode 2.Mid Speed 1. 1dots, small

Bidirectional-Adjustment

14 Test

Color-Alignment-Adjustment

K C M Y W1 W2 1.K base

LeftAdjustment 0 0 0 0 0 0

RightAdjustment 0 0 0 0 0 0

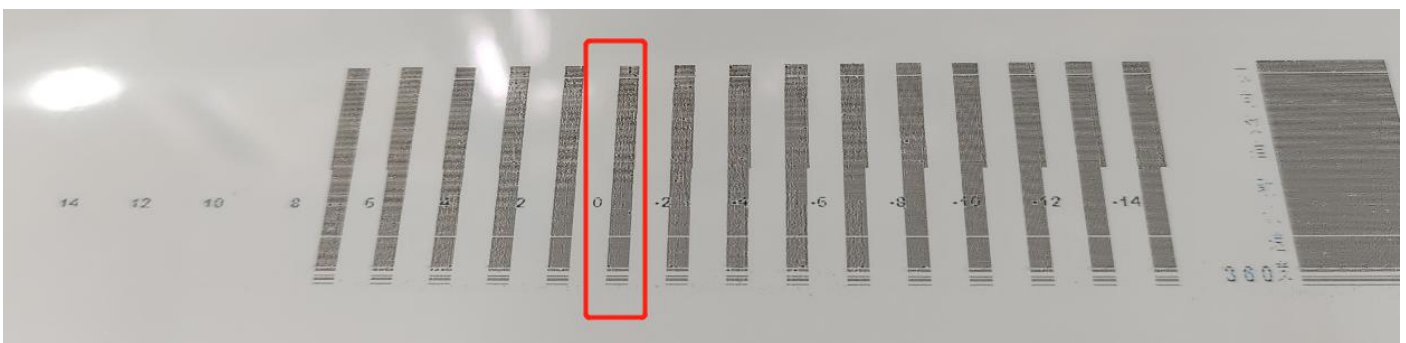
logic K1 K2 C1 C2 M1 M2

Test Test Save

L:H1-H2(1,2,3,4,5,6)

R:H1-H2(1,2,3,4,5,6)

Calibration: click test, print the test strip, make sure the color blocks at position 0 overlap, find the value of the overlapping color block, and then \pm value base on the original value, for example, if the alignment value is +2 , and original value is 14, So $14+2=16$, put 16 and save



Y Step Adjustment

System Config

Software Adjustment HardwareAdjustment ZCarSetting **Y-Config** Net Setting DriverSetting Heads arrange

Y-Motor Config

Frequency 1 Div Update ☐ Y SkipOnePass

PrintYMoveSpeed(KHz) 0 SpeedSpace(Steps) 0

PaperYMoveSpeed(KHz) 0 SpeedSpace(Steps) 0

Ypass-Adj

PASS count 6 Pass 0 Test Save

Pulse:mm 100000 Pulse Test 195 mm Save

PaperName 1.平板材料 Pic Lenght 50 mm related

Printed Lenght 49.6 mm ☐ Compensate

Y-Plat-MaxEable

☐ Y ZeroMax Enable ☐ Y ReturnZero When Poweron

☐ NeedPaper(at Y Zero) ☐ Conveyor belt Mode Y position

Max(steps) Read

MaxYlenght(mm)

CurrentPosition(steps) Apply24bit

XY-Org-Adj

X-Org-Adj 185 mm save

Y-Org-Adj 10 mm save

Optocoupler-Config

☐ X-Optocoupler ☐ at Org ☐ Scraping-Optocoupler ☐ at Org ☐ Z-Motor-Dir

☐ Y-Optocoupler ☐ at Org ☐ Z-Car--Optocoupler ☐ at Org ☐ Y-Motor-Dir

☐ Inkstack-Optocoupler ☐ at Org ☐ NeedPaper--Optocoupler

☐ PumpMotorLiftClosed

☐ Prevent impact ☐ Polar ☐ at Org

☐ Z-TestHeightPolar ☐ at Org

Read Apply

PinConfig

Click "Test " to print the test strip, measure the distance between the color patches as below, fill in the value, and save
(*only click one time save)

